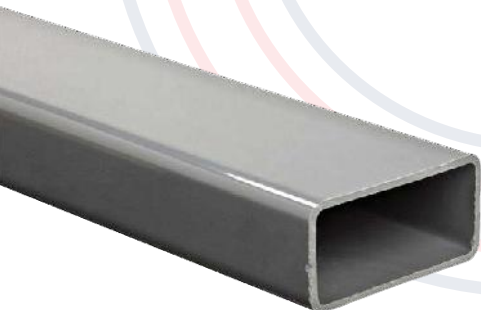


PTR RECTANGULAR

MEDIDA		CAL	KGS/PZA
Pulgada	MM		
2" X 1"	50.0 X 25.0	14	12.75
2 1/2" X 1 1/4"	64.0 X 32.0	14	16.78
2 1/2" X 1 1/2"	64.0 X 38.0	14	17.39
3" X 1 1/2"	75.0 X 38.0	14	19.70
3" X 2"	75.0 X 50.0	14	22.02
		11	34.16
		10	38.00
4" X 1 1/2"	100.0 X 38.0	7	52.78
		14	24.34
4" X 2"	100.0 X 50.0	14	26.66
		11	41.54
		9	51.06
4" X 3"	100.0 X 75.0	7	63.75
		11	48.98
4" X 3"	100.0 X 75.0	9	60.33
		7	74.75



PESOS TEÓRICOS CON UNA VARIACIÓN DE $\pm 5\%$
PESO CALCULADO EN PIEZAS DE 6.00 MTS.

PTR CUADRADO

MEDIDA			
Pulgada	MM	CAL	KGS/PZA
3/4" X 3/4"	19.0 X 19.0	14	6.47
1" X 1"	25.0 X 25.0	14	8.11
1 1/4" X 1 1/4"	32.0 X 32.0	14	10.43
		14	13.80
1 1/2" X 1 1/2"	38.0 X 38.0	12	17.20
		10	24.95
2" X 2"	50.0 X 50.0	14	17.39
		12	23.73
		10	35.10
2 1/2" X 2 1/2"	64.0 X 64.0	14	22.02
		11	34.16
		10	38.00
		7	52.75
3" X 3"	75.0 X 75.0	14	26.66
		11	51.54
		9	51.06
4" X 4"	100.0 X 100.0	7	63.75
		14	36.16
		11	56.36
		9	69.60
		7	85.80

PESOS TEÓRICOS CON UNA VARIACIÓN DE ±5%
PESO CALCULADO EN PIEZAS DE 6.00 MTS.

Dimensiones de secciones D x B		Calibre	Longitud en Mts.	Kg. por pieza
Pulgadas	Milímetros			
4 x 2	101 x 50	14	4	13.10
4 x 2	101 x 50	14	5	16.40
4 x 2	101 x 50	14	6	19.70
4 x 2	101 x 50	12	6	27.10
4 x 2	101 x 50	10	6	34.50
5 x 2	127 x 50	12	6	30.30
5 x 2	127 x 50	10	6	38.90
6 x 2	152 x 50	16	6	19.40
6 x 2	152 x 50	14	6	24.40
6 x 2	152 x 50	12	6	33.50
6 x 2	152 x 50	10	6	42.70
8 x 2 3/4	203 x 69	14	8	43.00
8 x 2 3/4	203 x 69	12	8	59.10
8 x 2 3/4	203 x 69	10	8	75.70
10 x 2 3/4	254 x 69	14	10	61.10
10 x 2 3/4	254 x 69	12	10	84.60
10 x 2 3/4	254 x 69	10	10	108.30
12 x 3 1/2	304 x 89	14	12	89.82
12 x 3 1/2	304 x 89	12	12	124.50
12 x 3 1/2	304 x 89	10	12	159.60

LÁMINA NEGRA EN HOJA

LÁMINA NEGRA EN HOJA

CALIBRE #	ESPESOR		PESO TEÓRICO		PESO APROXIMADO POR HOJA			
	Pulg.	Mm	Kg/m ²	Kg/pie ²	3 X 8	3 X 10	4 X 8	4 X 10
8	0.1640	4.17	33.57	3.12	74.85	93.56	99.80	124.75
9	0.1495	3.80	30.52	2.84	68.05	85.06	90.73	113.42
10	0.1345	3.42	27.46	2.55	61.23	76.54	81.64	102.05
11	0.1196	3.04	24.41	2.27	54.43	68.04	72.57	90.72
12	0.1046	2.66	21.36	1.98	47.63	59.54	63.51	79.38
13	0.0897	2.28	18.30	1.7	40.80	51.00	54.40	68.00
14	0.0747	1.90	15.26	1.42	34.02	42.53	45.36	56.70
16	0.0598	1.52	12.20	1.13	27.20	34.00	36.27	45.33
18	0.0478	1.21	9.76	0.91	21.76	27.20	29.01	36.27
20	0.0359	0.91	7.32	0.68	16.32	20.40	21.76	27.20
22	0.0299	0.76	6.10	0.57	13.60	17.00	18.13	22.67
24	0.0239	0.61	4.88	0.45	10.88	13.60	14.51	18.13
26	0.0179	0.45	3.66	0.34	8.16	10.20	10.88	13.60
28	0.0149	0.38	3.05	0.28	6.80	8.50	9.07	11.33
30	0.0120	0.30	2.44	0.23	5.44	6.80	7.25	9.07

LÁMINA GALVANIZADA EN HOJA

CALIBRE #	ESPESOR		PESO APROXIMADO POR HOJA EN KG						KG X M LINEAL	
	PULG	MM	3'X6'	3'X8'	3'X10'	3'X12'	4'X8'	4'X10'	3'	4'
16	0.0613	1.56	20.40	27.20	34.00	40.80	36.26	45.33	11.15	14.87
18	0.0493	1.25	16.40	21.86	27.33	32.80	29.15	36.44	8.97	11.96
20	0.0374	0.95	12.43	16.57	20.72	24.86	22.10	27.62	6.80	9.06
22	0.0314	0.80	10.43	13.91	17.38	20.86	18.54	23.18	5.70	7.60
24	0.0224	0.57	7.43	9.90	12.38	14.86	13.21	16.51	4.06	5.42
26	0.0194	0.49	6.43	8.57	10.71	12.86	11.43	14.29	3.52	4.69
28	0.0164	0.42	5.43	7.24	9.05	10.86	9.65	12.06	2.97	3.96
30	0.0135	0.34	4.46	5.95	7.44	8.92			2.44	
32	0.0112	0.28	3.70	4.93	6.17	7.40			2.03	

PESOS TEÓRICOS CON UNA VARIACIÓN DE ±5%
PESO CALCULADO EN PIEZAS DE 6.00 MTS.